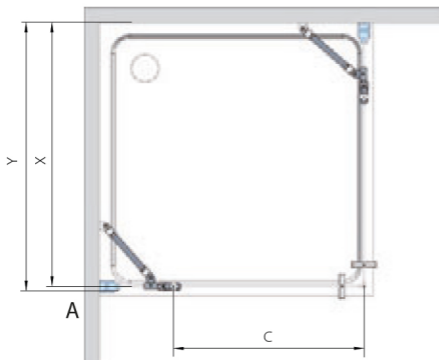
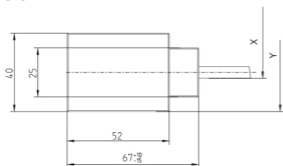


**MI EPF + MI EPF**



**A**



Stav při dodání



Modifikace +25 mm



| Varianta | Y (mm)    | X (mm)    | C (mm)  |
|----------|-----------|-----------|---------|
| 800      | 780-830   | 763-813   | 503/528 |
| 900      | 880-930   | 863-913   | 603/628 |
| 1000     | 980-1030  | 963-1013  | 703/728 |
| 1100     | 1080-1130 | 1063-1113 | 753/778 |
| 1200     | 1180-1230 | 1163-1213 | 803/828 |

Rozměry včetně modifikace +25 mm